



For Immediate Release:
December 03, 2009

Contact:
Mark W. Huber, 571-216-0365
mark.w.huber@usace.army.mil

SURVEYING AND MAPPING COMMUNITY OF PRACTICE NEWS BULLETIN

CORPSCON and Geoid09:

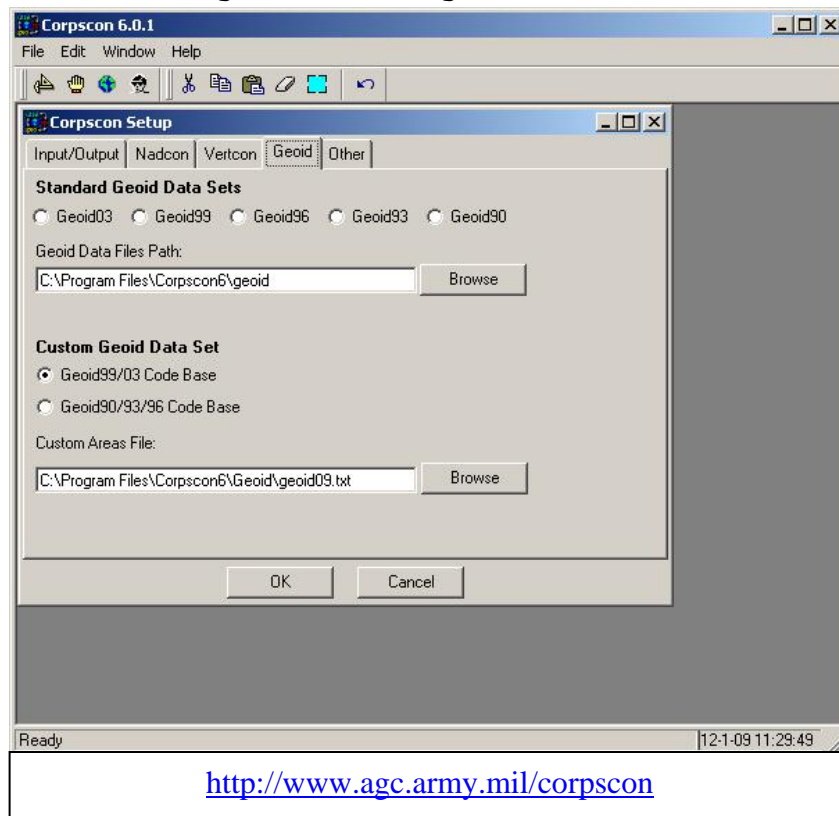
Jeff Ruby provided some guidance on the use of the Geoid09 model in CORPSCON. (I gotta learn to read the documentation)

You can configure Corpcon 6 to use Geoid09 by following the steps below:

1. Download all the Geoid09 files (g2009*.bin) from the NGS site (http://www.ngs.noaa.gov/PC_PROD/GEOID09/) to the Corpcon Geoid directory. If the default installation was used, this would be "C:\Program Files\Corpcon6\Geoid".
2. Save the attached file "geoid09.txt" to the same directory "C:\Program Files\Corpcon6\Geoid\geoid09.txt".
3. Open Corpcon and go to Convert->Setup and choose the Geoid tab page.
4. Select Custom Geoid Data Set->Geoid99/03 Code Base.
5. Browse to and select the geoid09.txt file saved above "C:\Program Files\Corpcon6\Geoid\geoid09.txt" as your Custom Area File.
6. Your configuration should look something like the image below
7. Press OK.

Contents of Geoid09.txt:

g2009u01.bin
g2009u02.bin
g2009u03.bin
g2009u04.bin
g2009u05.bin
g2009u06.bin
g2009u07.bin
g2009u08.bin
g2009a01.bin
g2009a02.bin
g2009a03.bin
g2009a04.bin
g2009h01.bin
g2009g01.bin
g2009s01.bin



<http://www.agc.army.mil/corpcon>